

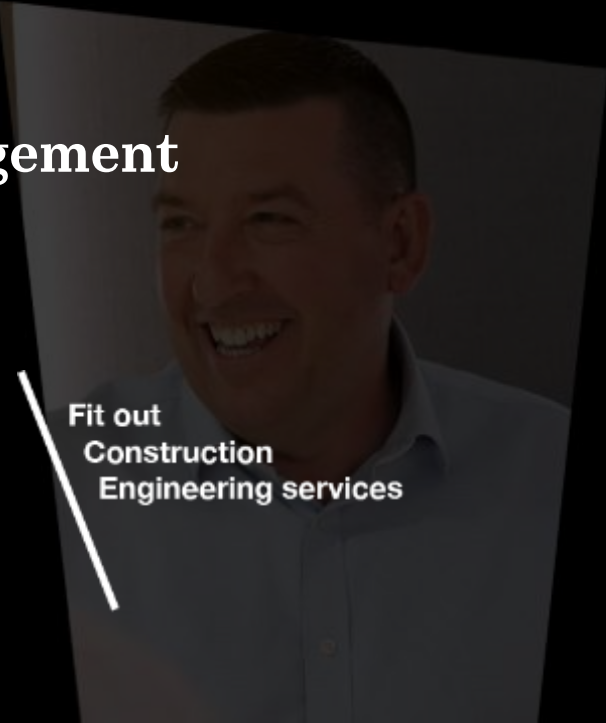
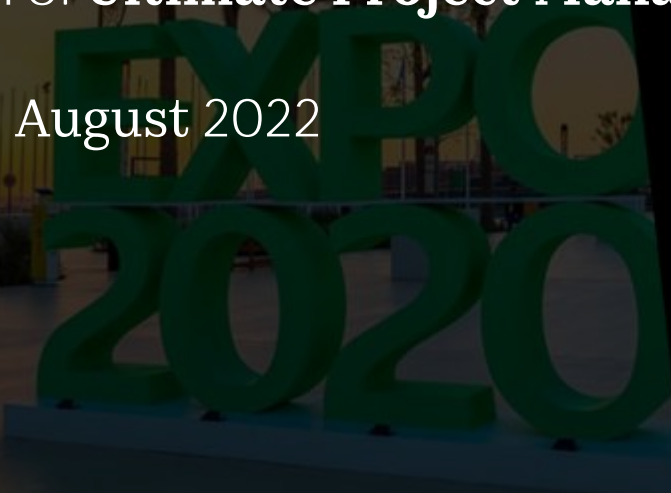


ISG's Capability in Middle East



To: **Ultimate Project Management**

August 2022



Fit out
Construction
Engineering services



Introduction

At ISG, our vision is to become the **world's** most dynamic construction services company, delivering places that help people and businesses thrive.

We have delivered projects for some of the world's most famous brands ranging in size, scope, and technical complexity. From small, bespoke fit-out works to prestigious, large-scale projects; we are dedicated on our focus to deliver places that help people and businesses thrive. We ensure high quality and consistent delivery and care deeply about ensuring our customers meet their business goals, with our focus always on the end user.

Our clients are as diverse as the projects we undertake and over the past 30 years we have developed lasting relationships, gaining invaluable experience in a variety of sectors across the UAE, as well as the globe. Our people's pride in what they do and the collaborative approach that underpins our work is the secret behind our enduring relationships, and why we remain a partner of choice for many multinational and local organisations.

Now more than ever, spaces reflect the brands they house and standing out from the crowd is key. We create exceptional spaces that personify the brands that operate within them, working flexibly with clients and partners to offer inventive solutions every step of the way. The journey to achieving an environment that empowers brands and the people at their heart to flourish isn't without its challenges. However, partnering with a trusted advisor with the ability to deliver real impact, globally, holds the key to making it a smooth one.

Delivering the places of tomorrow requires the ability to think big, collaborate widely and meaningfully, and build in real capacity for change. For this reason, everything we do at ISG – from our work with our customers to our relationships with our own people – is focused on delivering smarter and more resilient places for tomorrow.



“At ISG, delivering an outstanding customer experience is our primary focus. This is the reason why 67% of our work comes from repeat customers.”

Steve Ramsden, Managing Director, Southeast Asia & Middle East



Delivering transformational
places for people and
businesses.

Worldwide specialists in fit out, construction and engineering services

At ISG, we provide a comprehensive construction service offering to our clients around the world, working across sectors and geographies.

We have been providing construction solutions to some of the world's most successful and enduring businesses, cities and institutions for over 30 years. Our customers trust us to deliver – and our repeat business and numerous industry accolades prove it. Across Europe, the Middle East and Asia, we deliver places where people and businesses make memories, forge new experiences, and reach their goals.

Our 3,000 worldwide specialists in fit out, construction and engineering services deliver not just buildings, but also an exceptional delivery dynamic and strong customer relationships built on mutual trust, collaboration, and open communication. We blend our unparalleled track record, sound processes and proven delivery methods with a fast-paced and agile culture, ensuring we deliver thriving places that are as responsive and resilient as their occupants.



Services

Fit out, Construction, Engineering services

Sectors

Offices; Technology, science and health; Retail; Hospitality, leisure and living; Government, public sector and education

People

**Employing over 3,001 people
1015 new employees in 2021
78% would recommend ISG as a great place to work**

Geographies

Operating across 28 countries

ISG in the Middle East

Combining local expertise with experience gained from our teams around the world enables us to deliver high-value outcomes for our clients in the Middle East.

In the United Arab Emirates, we provide fit out and refurbishment services across four main sectors: office; technology, science and health; hospitality, leisure and living; and education and public sector.

Since the commencement of our operations in the region in 2007, our Middle East business has delivered projects worth AED 2.1 billion across these four sectors.

From our offices in Dubai and Abu Dhabi, we employ an international workforce and build strong relationships with the local supply chain, who we work very closely with, as a team, to ensure we reach your goals.

While we have the financial security that comes with being part of a group, we are also able to act with the independence and local focus of a small, targeted business. This allows us to source and procure local products with speed and value, with the capability to leverage on our global network if needed.

When it comes to winning work and delivering projects, not only do we rely on our global best practice for consistency across each step of the journey, we also adhere to requirements by local government authorities to ensure we achieve high standards of delivery and outcomes on every project.

Our skilled and specialised teams, are selected around you and your goals. We have the right experts for the job, and always put your needs and requirements first.

ISG in the Middle East at a Glance

- Established in 2007
- Delivered over AED 2.1 billion of projects
- Over 100 employees
- ISO 9001, 140001, 45001 certified
- BIM capability

Awards

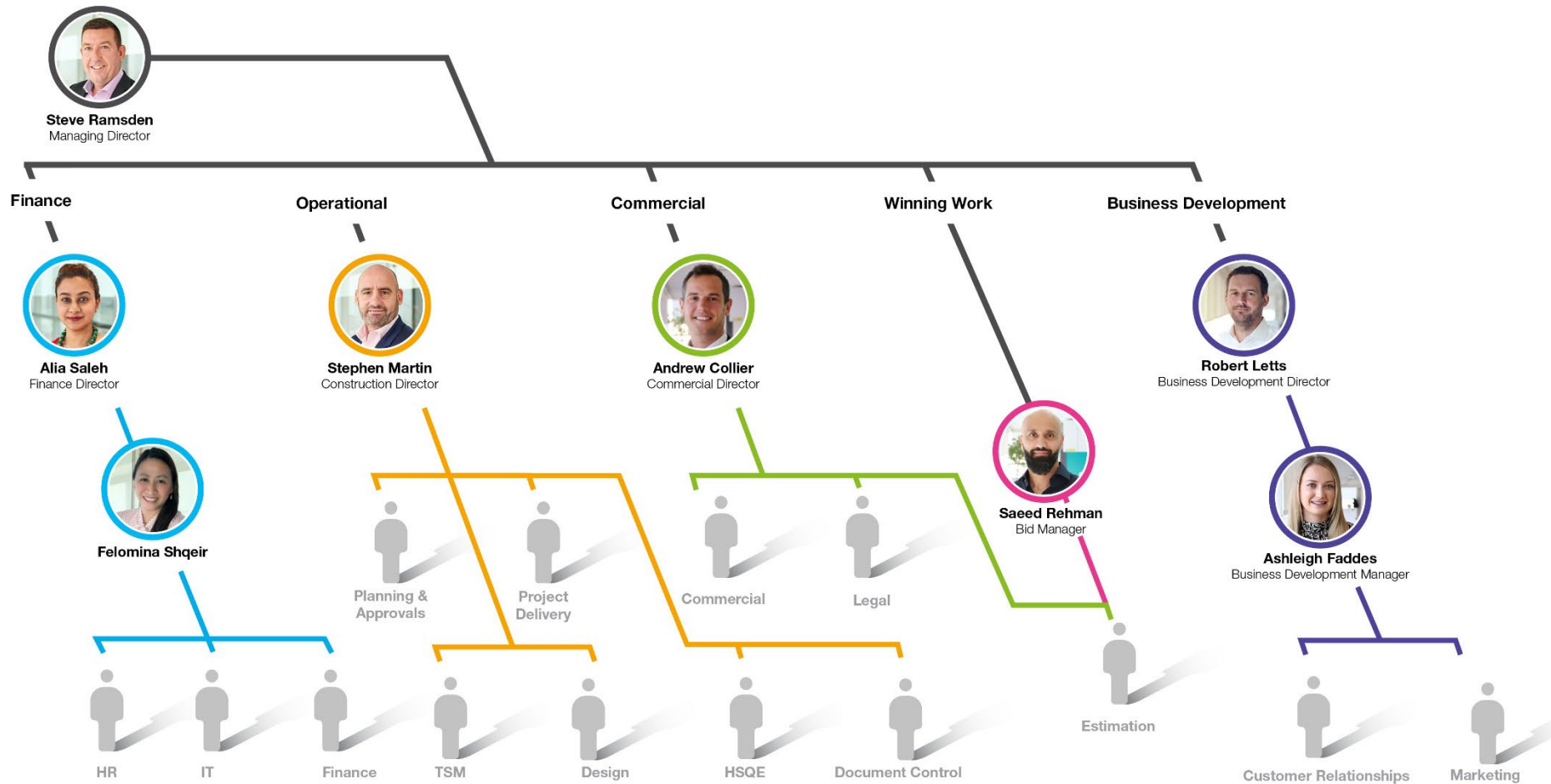
- Golden Excellence Card and HSQE Manager at Expo 2020 Taqdeer Awards 2022
- Gold at the Black Professionals in Construction (BPIC) Awards 2021
- Queens Award for Enterprise in the International Trade category
- Fit Out Company of the Year at Big Project Awards 2020
- Contractor of the Year at Index 2018
- Three CID awards won in 2011, 2013 and 2016

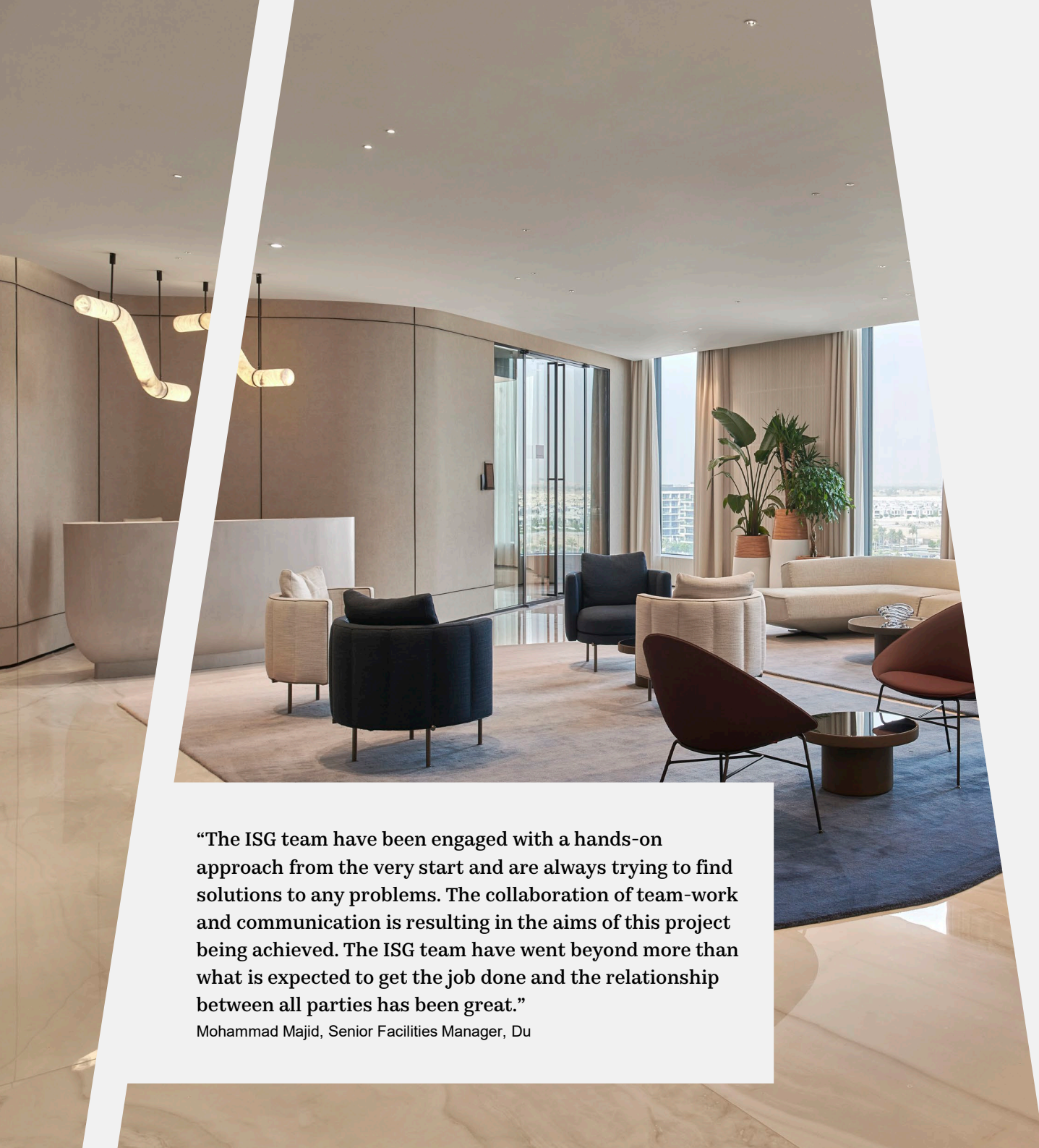


Scan here to
visit the website

Industry leading talent

We have dedicated teams of specialists to cater for your needs; from fast, agile works to large-scale projects.





Commercial Office

Now more than ever, spaces reflect the brands they house. Today's workplace must champion wellbeing, articulate culture and values, and entice gifted talent through the door.

At ISG, we know the office is rarely just a place to house people and systems, it is a key part of your business infrastructure. It forms the backbone for sophisticated technology and operations. It plays a key role in attracting and retaining the best people. As such, it must be as resilient and agile as the business that occupies it.

ISG has a strong legacy of creating offices that touch every aspect of the modern workplace. From new corporate headquarters, commercial towers, refurbished technology-led offices to the smaller moves and changes that keep companies competitive, we take our roles as enablers of business very seriously. We ask tough questions, challenge conventional methods and ultimately deliver offices that are more resilient to the future than their counterparts.

We care deeply about helping our customers meet their business goals – and our extensive track record, exceptional client list and rate of repeat business prove it.

After three decades working alongside developers, designers and end users to build, refurbish and fit out new office buildings and workplaces, we have an unrivalled portfolio and depth of expertise. We have delivered effective office environments for a range of local and international customers operating in a myriad of industries including government, finance, technology, media, pharmaceutical, retail and industrial.

With each project, we had the opportunity to combine the highest quality finishes with a complex range of technical and engineering services installations.

“The ISG team have been engaged with a hands-on approach from the very start and are always trying to find solutions to any problems. The collaboration of team-work and communication is resulting in the aims of this project being achieved. The ISG team have went beyond more than what is expected to get the job done and the relationship between all parties has been great.”

Mohammad Majid, Senior Facilities Manager, Du

Du HQ - Dubai

ISG were appointed to fit out 140,000 square feet of highly specified space for the new Emirates Integrated Telecommunications Company (Du) Headquarters from shell and core. The new space is housed in a 7-storey standalone building at Dubai Hills Business Park, which includes a top floor for executive offices, CEO & chairman suites, meeting rooms & majlis, open and closed office spaces, as well as a cafeteria and lounge.

The primary aims of the project were to take the Bluehaus Group design package and build this in line with the high-quality expectations of the client, adopting the latest activity-based workplace solutions in line with Du Workplace and Technical Building Requirements policies. Delivering on time was also essential due to the tenancy agreement between Du's current building tenancy and the new tenancy in Dubai Hills Business Park. It was critical to keep to the programme on this project and ensure Du moved in on time.



Project Value
Confidential

PMC
Du

Size
140,000 sqft

Cost Manager
Savills

Procurement Route
Traditional

Architect/Designer
Bluehaus

Programme Duration
20.5 weeks

Start & Completion Dates
Dec 2021 - Jun 2022

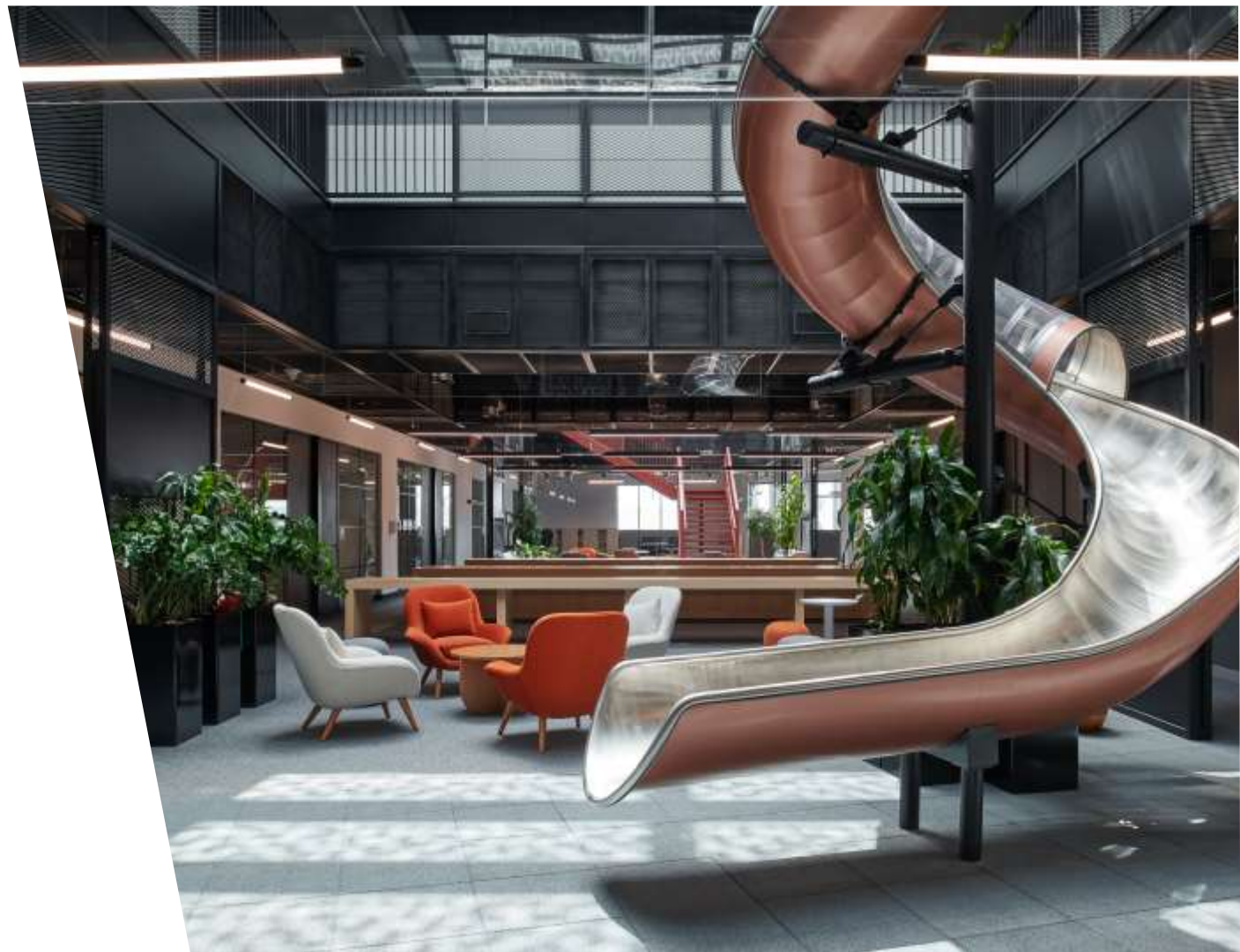


Miral HQ – Yas Island, Abu Dhabi

Spanning 3000 sqm, the new Miral HQ located on the buzzing Yas Island, Abu Dhabi features a distinct industrial aesthetic inspired by a theme park environment.

Our scope, as the lead fit out contractor for the Miral HQ included the built survey, structural and architectural works; complete MEP works; landscaping and signage. The delivery of spaces was also executed by ISG; including a reception and waiting area, 21 executive offices, 10 meeting rooms, a large flexible open working space with 71 open workstations and 22 hot desk spots and a large dining/multi-purpose area.

Key features such as contemporary meeting spaces, pops of colourful furniture and fixtures, structural metal works and of course the fully functional slide that runs from the top floor created this overall feel, making it a truly unique project.



Project Value
Confidential

Size
33,000 sqft

Procurement Route
Traditional

Programme Duration
28 weeks

Start & Completion Dates
September 2020 - April 2021

PMC
EllisDon

Cost Manager
Curry and Brown

Architect/Designer
GAJ

MEP Engineer
GAJ



ICD Brookfield Place – Micro Suites

The project involved the complete fit-out of two floors of office spaces in the prime commercial building of ICD Brookfield Place, which opened up in Dubai towards the end of 2020. The floors are split into a number of micro office spaces which are being leased out to various tenants as serviced office spaces.

The scope included the complete fit-out of level 29 and 30, from the shell and core state which included ceilings, gypsum partitions, glass partitions, staircase connecting the two floors, MEP, AV, IT, Security, raised access flooring, carpets, tiles, pantries, server rooms, lobbies and fixed furniture.

The works were executed to a design standard that is in line with the ICDBP building standard as well as the design intent of all similar Micro Suites / Flex offices that Brookfield has in various parts of USA.

Project Value
Confidential

Size
36,000 sqft

Procurement Route
Traditional

Programme Duration
18 weeks

Start & Completion Dates
April 2021 – October 2021

PMC
Inspire

Cost Manager
Turner and Townsend

Architect/Designer
Mammol Radziner Associates

MEP Engineer
Samadhin Associates



ICD Brookfield Place – Community Hub

The project involved the complete fit-out of a retail space located at the ground floor of ICD Brookfield Place. This space was fitted out in line with the ID design provided by Roar and the MEP design was developed by ISG inhouse. The shared space is intended to cater to multiple stakeholders and will be used for mixed purposes e.g marketing, art exhibitions, tutorials, presentations and meetings.

The scope included all MEP installations, AV, IT, security installations, gypsum walls, fabric ceilings, textured wall finishes, wallpaper, customisable furniture, fixed furniture, wooden/metal ceilings, vinyl flooring, carpets, wall panelling, façade works.

The fit-out was completed from the ground up featuring blockwork demise walls, also built by ISG under a different work order, as part of the overall framework.

Project Value
Confidential

Size
1,500 sqft

Procurement Route
Traditional

Programme Duration
10 weeks

Start & Completion Dates
February 2021 – April 2021

PMC
Inspire

Cost Manager
Turner and Townsend

Architect/Designer
Roar Design

MEP Engineer
Samadhin Associates

Microsoft – Internet City, Dubai

ISG in the Middle East was awarded a project by Microsoft to deliver a fit out of their existing 60,000 sq ft office, across four floors located in Dubai Internet City – a development that is home to technology start-ups and Fortune 500 companies.

For this project, ISG had to demolish existing partitions and MEP from the shell and core, while retaining the raised access floor. The general fit out of the open plan office found across three floors comprised of dry and wet pantries, washrooms, a games area, large and small meeting rooms, focus rooms, conversation rooms, and phone booths. Working within a live office environment, the team ensured continuity of business operations with little to no disruption by splitting the 47-week programme across four phases – dedicated to each floor of the fit out.

On top of this, ISG faced timeframe issues within the first phase which were shorter in comparison to the rest of the phases. While night shifts were introduced to complete this phase on time, it led to a compromise in quality due to the volume of snagging that surfaced post-handover. The facilities management (FM) team for this project were inexperienced in managing fit outs – which saw ISG stepping up on communications with the FM team to walk them through the processes involved, ultimately alleviating their concerns.



Project Value
Confidential

Size
60,000 sqft

Procurement Route
Traditional

Programme Duration
47 weeks

Start & Completion Dates
March 2019 – January 2020

PMC
Turner and Townsend

Cost Manager
Turner and Townsend

Architect/Designer
Perkins and Will

MEP Engineer
Cundall



Expo Parcel A – Expo 2020, Dubai

ISG completed the fit out of several offices including The Bureau of International Expositions Ceremonies Offices, Expo Ceromancies Offices and Government Offices across a total of 3 floors within Parcel A at Expo 2020. These benchmark facilities will be recognised on an international level through the combination of high-quality, cutting-edge technology facilities coupled with an attractive, exciting, and operationally efficient working environment for the different organisations across all offices. The Bureau of International Expositions Ceremonies Offices will also be closely functioning with the Expo Media Centre. The Shell + Core design for the building (G+9) and the associated building services, have been developed to serve as an Office building in the Legacy condition and this project will provide the fit out of the building to meet the clients requirements for the event use for the duration of Expo 2020.

Project Value Confidential	PMC WSP
Size 24,000 sqft	Cost Manager
Procurement Route Traditional	Architect/Designer WSP/Bluehaus
Programme Duration 16 weeks	MEP Engineer Bluehaus
Start & Completion Dates January 2021 – May 2021	



Expo Media Center – Expo 2020, Dubai

ISG were appointed as the main contractor to provide the Expo Media Centre (EMC) facility for Expo 2020. The EMC Centre encompasses 82,000 sq ft of purpose-built campus, providing state-of-the-art facilities featuring cutting edge technology for the world's media throughout the six-month duration of the Expo. The shell and core designed building will be a central hub for monitoring and controlling all of Expo's events, across 8 levels of Al Wasl Plaza and is inclusive of:

- TV & Radio Rooms
- Production Rooms
- Master Control Room
- Editing Suits
- Green Room
- Interview Rooms
- Press Briefing
- Offices, Catering Area & Roof Lounge

Project Value Confidential	PMC Mace/Jacobs
Size 82,000 sqft	Cost Manager Atkins
Procurement Route Traditional	Architect/Designer WSP
Programme Duration 29 weeks	MEP Engineer WSP
Start & Completion Dates December 2020 – July 2021	

Ericsson Innovation Hub – TECOM, Dubai

Ericsson appointed ISG to construct their new 2,154 sqm. office, located within Innovation Hub, Building 2, Level 3, TECOM, Dubai. The scope of works included:

The aims of the project in which ISG complied to were:

- To take the current Space Matrix and RVT design package and further develop as part of a design and build offering in line with the and quality expectations of Ericsson.
- To deliver a space that achieves the WELL accreditation which Ericsson seek.
- To maintain the highest safety standards throughout the construction works always.
- To adopt the latest activity-based workplace solutions in line with Ericsson Workplace and Technical Building Requirements policies.

Project Value
Confidential

PMC
CBRE

Size
24,000 sqft

Cost Manager
CBRE

Procurement Route
Design and Build

Architect/Designer
Space Matrix

Programme Duration
15 weeks

MEP Engineer
RVT Engineering

Start & Completion Dates
August 2019 – December 2019

Sustainability
WELL: Silver Accreditation



Citibank HQ - Dubai

ISG were appointed to renovate and refresh the complete headquarters building for Citibank at Oud Metha. Covering over 100,000sqft spread across 2 building and 10 floors, this project was one which required a contractor who could deliver the works whilst in occupation with minimal disruption. ISG has in the region delivered multiple projects of a similar nature and working alongside the Project Managers we were able to meet this challenge. The project was split into 4 phases.

Works were sequenced to allow multiple moves of staff between floors and moving over 2000 staff in total was something which required a lot of coordination; including furniture installations and final IT connections having to be done to precision timing. Keeping all of the stakeholders informed of these changes and controlling the budget and programme were all areas which ISG worked closely with the Citibank professional team.

Project Value Confidential	PMC AECOM
Size 100,000 sqft	Cost Manager AECOM
Procurement Route Traditional	Architect/Designer Perkins and Will
Programme Duration 35 weeks	MEP Engineer Cundall
Start & Completion Dates December 2017 – May 2018	



Linklaters – ICD Brookfield, DIFC, Dubai

The Project involves a turnkey fit out of an office located in ICD Brookfield Place to house the new Dubai office of Linklaters. The scope includes the complete fit out from a shell and core state comprising of: ceilings, gypsum partitions, glass partitions, operable partition, MEP, AV, IT, carpet, tiles, shower room, server room, meeting rooms, offices, focus rooms, staff café & a large collaborative open plan work space. The works are in line with Linklaters international guidelines and regulations for sustainability and fit within the modern high-standard Landlord design fit-out guidelines.

Construction execution was a great success achieving occupancy on time for Linklaters to move from their existing office with a seamless transition. A successful project close-out was at the very top of priorities for Linklaters and Turner & Townsend which ISG achieved without any issues, scoring a 10 out of 10 from both during our final Customer Satisfaction survey.

Project Value Confidential	PMC Turner & Townsend
Size 9,000 sqft	Cost Manager Turner and Townsend
Procurement Route Traditional	Architect/ Designer TPB/ BHG
Programme Duration 16 weeks	ME Engineer CBDSP
Start & Completion Dates November 2020 – April 2022	

ADGM – Abu Dhabi

ISG provided engineering-led services and completed the fit out of the Abu Dhabi Global Market (ADGM) prestigious headquarters, which spans 60,000 sq ft, in March 2018.

The scope included the full fit out of four floors within an occupied building at the heart of the Abu Dhabi Global Market Square. The project involved upgrading all live systems such as power, AC and other technology systems including state-of-the-art audio-visual systems, virtual meeting installations, such as telepresence and halo rooms, fiberoptic installations, structured data cabling and converged IP networking. The scope also included conversion of existing office space into a court for corporate disputes, which falls under the ADGM authority, installation of state-of-the-art audio visual to monitor, record and facilitate all events happening within the court space.

Project Value
Confidential

Size
60,000 sqft

Procurement Route
Traditional

Programme Duration
28 weeks

Start & Completion Dates
September 2017 – March 2018

PMC
AECOM

Cost Manager
AECOM

Architect/Designer
Perkins and Will

MEP Engineer
Cundall



Huawei HQ – Dubai

ISG fitted out the first regional headquarters for Chinese technology giant, Huawei, in Dubai, delivered at the start of 2019. The new headquarters is housed in a 6-storey standalone building, adjacent to Dubai Internet City.

During a rigorous 20-week programme, ISG fitted out 60,000 sq ft. from a shell and core finish and delivered highly-specified office and recreational space for over 500 Huawei staff, which included a top floor gym, cafeteria as well as a luxurious CEO suite, VP offices, break out areas, meeting and interview rooms. ISG also constructed the server rooms and all the required IT infrastructure for this project.

The base build was incomplete at the time of ISG's mobilisation, with as much as 100 construction workers still deployed on site. Accordingly, ISG had to align its fit-out work programme with the main building construction progress, to maximise efficiency and minimise delays.

Working with interior designers and MEP consultants who are based overseas, with almost no on-the-ground representation, was also a challenge. Limited face time with other consultants put ISG's ability to communicate with project stakeholders to the test, but ISG's meticulous communications frameworks, as well as diligent documentation procedures served the project team well.



Project Value
Confidential

PMC
CBRE

Size
60,000 sqft

Cost Manager
CBRE

Procurement Route
Traditional

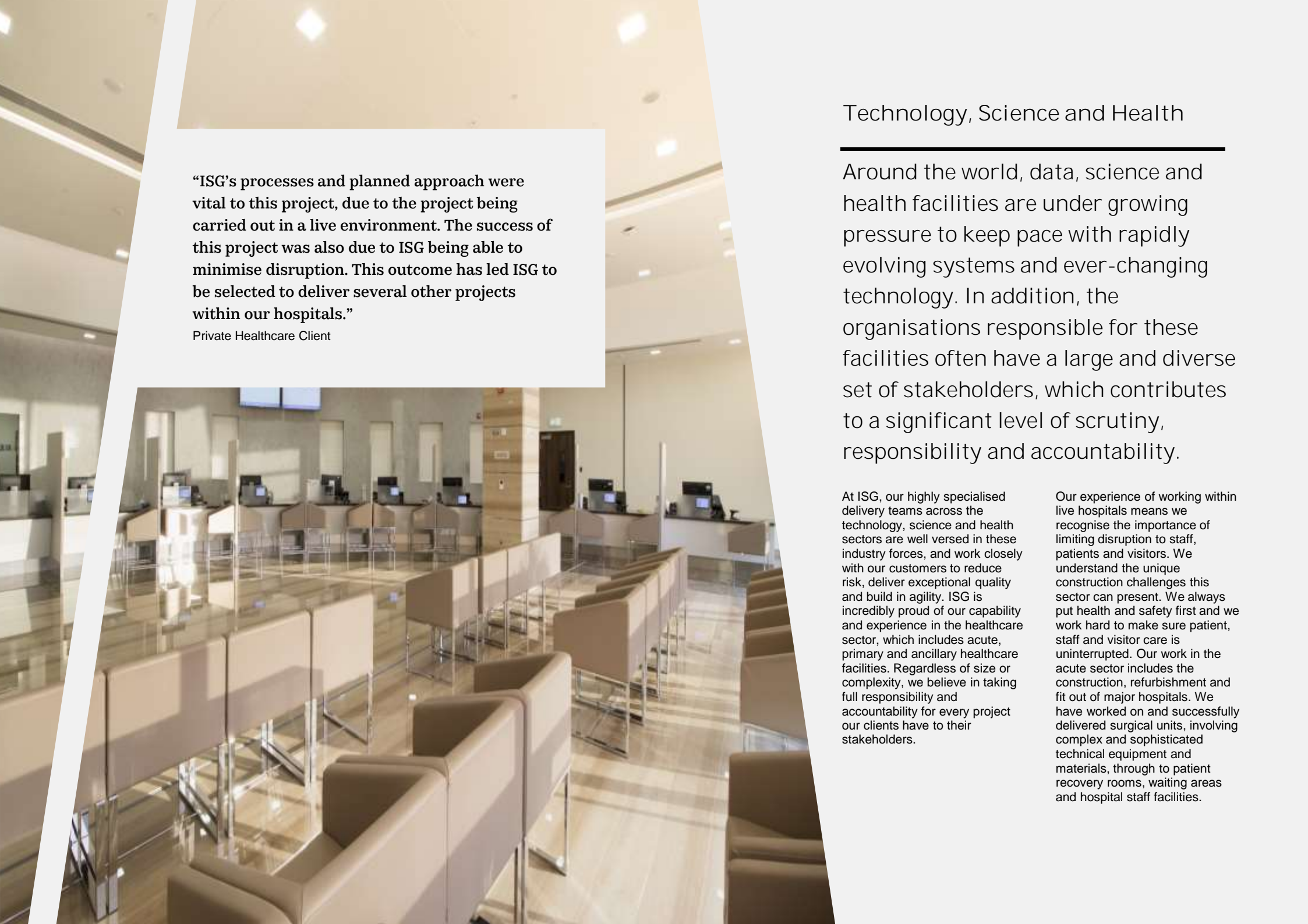
Architect/Designer
Aedas

Programme Duration
20 weeks

MEP Engineer
Cundall

Start & Completion Dates
August 2018 – January 2019





“ISG’s processes and planned approach were vital to this project, due to the project being carried out in a live environment. The success of this project was also due to ISG being able to minimise disruption. This outcome has led ISG to be selected to deliver several other projects within our hospitals.”

Private Healthcare Client

Technology, Science and Health

Around the world, data, science and health facilities are under growing pressure to keep pace with rapidly evolving systems and ever-changing technology. In addition, the organisations responsible for these facilities often have a large and diverse set of stakeholders, which contributes to a significant level of scrutiny, responsibility and accountability.

At ISG, our highly specialised delivery teams across the technology, science and health sectors are well versed in these industry forces, and work closely with our customers to reduce risk, deliver exceptional quality and build in agility. ISG is incredibly proud of our capability and experience in the healthcare sector, which includes acute, primary and ancillary healthcare facilities. Regardless of size or complexity, we believe in taking full responsibility and accountability for every project our clients have to their stakeholders.

Our experience of working within live hospitals means we recognise the importance of limiting disruption to staff, patients and visitors. We understand the unique construction challenges this sector can present. We always put health and safety first and we work hard to make sure patient, staff and visitor care is uninterrupted. Our work in the acute sector includes the construction, refurbishment and fit out of major hospitals. We have worked on and successfully delivered surgical units, involving complex and sophisticated technical equipment and materials, through to patient recovery rooms, waiting areas and hospital staff facilities.

Cleveland Clinic – Abu Dhabi

ISG delivered multiple projects across 260,000 sq ft of space at Cleveland Clinic, Abu Dhabi, within a live environment.

The delivery included:

VIP Kitchen Alterations

ISG carried out the refurbishment on the existing VIP Kitchens and service areas, conducting the works whilst allowing the CCAD food service team to operate efficiently.

Staff Kitchen Alterations

The existing staff kitchens on Level 6 were stripped out and rebuilt. New clean food delivery and food waste routes were formed.

Loading Bay refurbishment

A full refurbishment of the Cleveland Clinic loading bay area including the installation of a new ceiling and waste management system.

Medical Store

A conversion of a large car park space into a climate controlled Medical Store Facility consisting of a 5000m² storage area, offices, canteen and welfare facilities. Demolition and civil modification works were required to link the new space with the existing medical store.

Cleveland Clinic, Levels 12-18

The reconfiguration of cat A spaces. New offices, meeting rooms and break-out spaces were formed.

Executive Health Center

The provision of an Executive Health Care Centre extending to 15,000 Sq ft is sited on the existing CCAD facilities. This consisted of a staff lounge, team office, nursing station, patient suites, clinics, treatment rooms, and examination rooms.



Project Value
Confidential

Size
260,000 sqft

Procurement Route
Design and Build

Programme Duration
60 weeks

Start & Completion Dates
October 2016 – December 2017

PMC
Confluence Project Management LLC

Cost Manager
Confluence Project Management LLC

Architect/Designer
Perkins and Will

MEP Engineer
Wallace Whittle



Healthpoint Hospital – Abu Dhabi

ISG were appointed to deliver the fit out of a 95,000 sq ft hospital, within a live environment.

Replacement of AHU's (Phase 1)

These works consisted of the replacement of 3 AHU's and associated return air units.

VIP/Physio Rooms

These works consisted of modifications and the upgrading of existing areas on the ground floor and Level 2.

Replacement of AHU's (Phase 2)

After the successful completion of Phase 1, ISG were appointed to carry out phase 2 of the replacement of 24 AHU's throughout the VIP hospital.

Healthpoint, Package CP04

This package featured the fit-out of 70,000sqft of space including a dental ward, a medical screening clinic, an aesthetics clinic, a new pharmacy, an inpatient ward and a new laboratory.

L3 Plastics

The fit out of L3 Plastics ward included all medical gas installations, nurse call systems and MEP infrastructure resilience with UPS back up for critical equipment.

Level 2 Package 9.8 Component Program

This included the demolition of a current admin space at Level 2 Clinic to be converted to 7,000sqft of clinical space featuring general exam consultation rooms, ENT rooms, VGN, audio booth, ABR rooms, assessments rooms and assessment rooms.



Project Value
Confidential

Size
95,000 sqft

Procurement Route
Traditional

Programme Duration
30 weeks

Start & Completion Dates
May 2017 – December 2017

PMC
Parsons International Limited

Cost Manager
Parsons International Limited

Architect/Designer
Astorino – Cannon Design

MEP Engineer
Astorino – Cannon Design



MAF Poly Clinics – Dubai

MAF Poly Clinic Al Barsha

Taking the project from shell and core to the fit-out stage, we are working on Green Star rated design consisting of patient consulting rooms, phlebotomy treatment and vital rooms as well as the reception / waiting rooms, server and operator's office.

MAF Poly Clinic Nad Al Hamar

ISG were appointed to transform a sports club into a healthcare clinic. The clinic would feature several key facilities such as consultation rooms, dental rooms using high end state-of-the-art devices and technologies within the clinic.

The project consisted of the fit-out of 11 consultation rooms, 2 dental rooms including a sterilization room, 2 treatment rooms, 1 phlebotomy room and a pantry, reception & waiting area with toilet facilities within Bel Remaitha Club, Nad Al Hamar, Rebaat Street, Dubai.



Project Value
Confidential

PMC
JLL

Size
8,600 sqft

Cost Manager
JLL

Procurement Route
Traditional


Architect/Designer
Perkins and Will

Programme Duration
16 weeks

MEP Engineer
Cundall

Start & Completion Dates
Various Timelines





“This was not a normal project due to the number of changes, and high-profile stakeholders and clients involved. The ISG team were very consistent and clear, and managed multiple parties’ expectations well. Expo had comprehensive sustainability standards which ISG followed precisely. ISG also advised several 3rd parties on sustainable initiatives, which highlighted their ESG values.”

Afraa Alshalabi, Project Lead, Expo Thematic Pavilions

Hospitality, Leisure and Living

At ISG, we put your end user at the heart of everything we do and our team of fit out experts have a deep understanding of the importance this for the hospitality industry.

At ISG, our hospitality and leisure experts have worked alongside some of the world’s most recognisable brands to create inviting and memorable destinations that create loyal customers, become highly regarded destinations, and help put cities on the map.

Our work, which includes hotels, award-winning dining destinations, theatres and entertainment venues, stands out for the quality of our end product, and for our experienced, highly specialised and knowledgeable people, who work within our dynamic culture to flex and provide smarter, more innovative, and faster solutions.

With over 850,000 sq ft of hospitality and leisure projects completed in the Middle East, we demonstrate a deep understanding of the industry through our teams on the ground and our supply chain, who work with our clients and consultants to deliver places that stand up to the test of time.

Our hospitality portfolio ranges from private boutique establishments through to international chains, encompassing both new and existing premises as well as listed buildings. This gives us the opportunity to continually showcase our full range of capabilities including refurbishment and fit out, through to full mechanical and electrical installations and infrastructure upgrades.



Kempinski Hotel, Mall of the Emirates – Dubai

As the oldest luxury hotel collection in the world, the Kempinski name is associated with the highest standards of luxury and impeccable personal service. This cherished tradition can be felt throughout the 330,000sqft Kempinski Hotel Mall of the Emirates, which opened in April 2006, as the first property in the city of Dubai.

The client wanted to firstly transform the hotel bathrooms to reflect the Kempinski standard together with individual room makeovers that demonstrate style, comfort and personality. In conjunction with this the common areas, restaurants and bars were upgraded.

ISG completely refurbished all of the external facades whilst also adding a new façade lighting scheme. An external terrace complete with olive trees and a water feature was also added that by day serves as a dining terrace and by night doubles as a trend setting bar. Upgraded reception area, a wood panelled re-modelled bar complete with a mosaic ceiling and private dining facility, all day dining restaurant, kitchens and 393 bedrooms, including more than 20 suites with balconies on the upper floors, were extensively upgraded. This involved major strip out works in a rolling sequence of floors to maintain the client's programme. In addition, major structural works were undertaken to sheer walls where new meeting rooms were created.

All of the above was undertaken within a logistically challenging, extremely restricted site with a brief from the client that ISG should be invisible to anyone in the hotel.



Project Value
Confidential

Size
330,000 sqft

Procurement Route
Traditional

Programme Duration
78 weeks

Start & Completion Dates
March 2014 – September 2015

PMC
Majid Al Futtaim

Cost Manager
MLC International

Architect/Designer
Aukett Fitzroy Robinson

MEP Engineer
WSP/ Parsons Brinckerhoff

Akira Back Restaurant, Palm Jumeirah - Dubai

ISG was appointed to undertake the fit out for two signature F&B concepts, which occupy the 5th floor of the W Hotel, located on the breathtaking Crescent Road, on Palm Jumeirah and overlooking the pristine blue waters of the Arabian Gulf.

ISG delivered the bespoke fit out of Japanese Fusion restaurant Akira, a new luxurious outlet for Michelin-Starred celebrity chef, Akira Back featuring panoramic views of Dubai and vast outdoor terrace. Situated on the upper level of the 5th floor, Akira Back restaurant, a Japanese offer with a Korean twist, demanded an interior that would act as a showcase the chef's ecosite creations, whilst taking guests on a journey that is experienced in any of his restaurants in the world. Huge, three-dimensional, contoured clouds are suspended over the guests, with raised booths offering exceptionally comfortable views out over the pool area and across the marina skyline.

Hidden on the back line of the restaurant is the PDR. Loosely styled on a Japanese pavilion, but finished in a rustic and concrete like finish, features flashes of tiger motifs (Akira's birth year) with moss growing on the walls and into the carpet.

Project Value Confidential	PMC Mace
Size 17,000 sqft	Cost Manager Line Sight
Procurement Route Traditional	Architect/Designer Keane Brands LLC
Programme Duration 19 weeks	MEP Engineer HIDI Group
Start & Completion Dates April 2017 – November 2017	



Sobe Rooftop Lounge, Palm Jumeirah - Dubai

Again located in the W Hotel, Palm Jumeirah, ISG were also appointed to fit out a stunning bar and lounge which is adjacent to the Akira Back restaurant.

Sobe, is the destination bar at the W Hotel featuring a sundown terrace and a lively main terrace and totaling 1,574 sq m. It features eclectic interiors which draws influence from South Beach Miami. An area where Deco meets Latin and Caribbean and boasts ornate metal work, which was customised and hand hammered locally in Al Qouz. For this high-end concept, ISG managed procurement, supply, logistics and installation of the complete fixtures, fittings and equipment (FF&E) package. The package consisted of 500+ items including, integrated and loose furniture, custom lighting, special metal works, various types of tiles, carpets and artworks. ISG sourced almost 80% of these items locally.

ISG also played a key role in consolidating the final design concept in a way which improved its buildability in line with the requirements of local authorities for approvals.

Project Value Confidential	PMC Mace
Size 15,000 sqft	Cost Manager Line Sight
Procurement Route Traditional	Architect/Designer Keane Brands LLC
Programme Duration 19 weeks	MEP Engineer HIDI Group
Start & Completion Dates April 2017 – November 2017	

Best of the Best Restaurants – Expo 2020

BOTB are 10 bespoke fine-dining restaurants spread across various districts at Expo 2020. Each restaurant was fit-out from shell and core; designed and delivered to house a variety of international brands and world-famous chefs, ultimately being the focal point of food and beverage at Expo 2020. Each outlet is a unique design to achieve each brand's concept and theme of the cuisine.

Each individual restaurant was completed with bespoke joinery, MEP, AV, security, full kitchen fit outs, range of floor finishes and a mix of traditional and contemporary finishes to boast the culture, traditions and widely recognised branding.

The 10 Best of the Best restaurants were completed in a record-breaking time of 12 weeks which involved designing, procuring and building each individual restaurant. This was a miraculous achievement for ISG and was undoubtedly due to significant team-work, dedication and collaboration from ISG's team with all stakeholders.

Project Value
Confidential

Size
30,000 sqft

Procurement Route
Design and Build

Programme Duration
12 weeks

Start & Completion Dates
July 2021 – September 2021

PMC
Mace/ Jacobs

Cost Manager
Atkins

Architect/Designer
DWP

MEP Engineer
TUV-SUD



Expo Local Gems – Expo 2020

The Local Gems consists of 7 bespoke food and beverage spaces that are fit out from shell and core. These restaurants were specifically designed and delivered to house local brands specialising in local delicacies at Expo 2020. Each outlet is fine tuned to creatively display the theme of the cuisine and this is then complimented with bespoke joinery, MEP services, full kitchen fit outs, polished concrete floors and a mix of traditional and contemporary finishes to boast the culture, traditions and widely recognised branding of each restaurant.

Project Value Confidential	PMC Mace / Jacobs
Size 22,000 sqft	Cost Manager Atkins
Procurement Route Design and Build	Architect/Designer Roar
Programme Duration 20 weeks	MEP Engineer TUV-SUD
Start & Completion Dates February 2021 – June 2021	



Expo Food Halls – Expo 2020

The Food Halls (FH) comprise of two vast turnkey spaces, designed and delivered for two different brands, creating contemporary F&B areas for the visitors of Expo 2020. Food Hall 1 boasts a mix of 'food hall' dining as well as high end dining. It hosts many one-of-a-kind, attracting features such as 'chefs table' seating areas and private areas for a VIP dining experience, as well as a large terrace looking on to the renowned Al Wasl Dome.

With a contemporary, clean feel created through soft wooden finishes and lots of greenery using many planters and trees within the venue; it is certainly no ordinary food hall encounter. Food Hall 2 delves into the depths of traditional African cuisine with countless themes and finishes displayed through the multiple food 'pods' on show throughout the venue. The African culture is further explored through vibrant aesthetics and the use of bold contrasting colours, patterns and textures throughout the venue complimented by the choice of joinery finishes, signage and graphics.

Each space boasts varying finishes, complex MEP installations including lifts and high-end kitchens that have been installed for chefs from all over the world to boast their culinary skills at Expo 2020.

Project Value Confidential	PMC Mace/ Jacobs
Size 62,000 sqft	Cost Manager Atkins
Procurement Route Design and Build	Architect/Designer BHG
Programme Duration 20 weeks	MEP Engineer BHG
Start & Completion Dates February 2021 – June 2021	

Golden Tulip Media Hotel – Dubai

Overlooking Al-Barsha Heights Dubai, Golden Tulip Media Hotel is a 4-star hotel hosting a variety of services and facilities. With over 15 floors, the hotel comprises 158 fully equipped studio rooms as well as apartments. ISG upgraded the configuration of the current 13 self-contained keys per floor. This created a new footprint of 22 keys on levels 7 through to 11, 8 keys on levels 12 to 14 and 16 keys on level 15.

CHDI were both PMC and designer, and a dedicated team worked together with them to deliver the finished space, incorporating the design changes achieving the desired quality level. The new footprint encompasses the demolition of all internal walls as well as ceilings with formation of 22 keys on each level. There is a new marble and sanitary fittings in the bathrooms along with new exciting finishes in all apartments. In addition to this significant work, ISG were also responsible for the conversion of all front of house area with new marble, walnut walls, new ceilings, and carpets. Golden Tulip Media Hotel is the winner of the award "Hotel of the Year 2014" in the Middle East and North Africa.

ISG have undertaken numerous enhancements including the formation of a new guest entrance, transformation of the current reception as well as restaurant area to a vibrant state of the art welcoming area, installation of new glass entrance doors with beautiful marble to floors and walls along with a grand reception area, guest toilets, lift lobbies and adjoining corridors.



Project Value
Confidential

Size
100,000 sqft

Procurement Route
Traditional

Programme Duration
40 weeks

Start & Completion Dates
June 2017 – April 2018

PMC
CHDI

Cost Manager
CHDI

Architect/Designer
CHDI

MEP Engineer
Chapman BDSP



Noir Lounge – Kempinski Hotel, MOE, Dubai

ISG were appointed by MAF to demolish, refurbish and extend the existing Kempinski MOE 5-star lounge bar, whilst also doing the refurbishment of the Kempinski hotel.

The project is in-keeping with the Kempinski's 5-star brand with high end materials and finishes sourced from around the globe; the design includes several material finishes, such as, hand tufted carpets, crystal cladding, European laser cut stone and marble on the floor, walls and ceilings all of which are bespoke.

Project Value
Confidential

Size
4,000 sqft

Procurement Route
Traditional

Programme Duration
19 weeks

Start & Completion Dates
May 2015 - September 2015

PMC
Majid Al Futtaim (MAF)

Cost Manager
MLC International

Architect/Designer
Aukett Fitzroy Robinson

MEP Engineer
WSP / Parsons Brinckerhoff



Olea Restaurant – Kempinski Hotel, MOE, Dubai

ISG completed the all-day dining restaurant, including large commercial kitchen, show kitchen and support pantry.

The existing back of house kitchen and bar areas were extended out onto a terrace area creating additional internal floor area.

The project also entailed the creation of a new external terrace dining area and shisha bar. In addition to the main dining areas the all-day dining restaurant design also includes a large show kitchen and complete fit out of a commercial kitchen and a support pantry area.

The all-day dining restaurant was completed and handed over to MAF 4 weeks early.

Project Value
Confidential

Size
7,000 sqft

Procurement Route
Traditional

Programme Duration
19 weeks

Start & Completion Dates
May 2015 – September 2015

PMC
Majid Al Futtaim

Cost Manager
MLC International

Architect/Designer
Aukett Fitzroy Robinson

MEP Engineer
WSP / Parsons Brinckerhoff

Thematic & Country Pavilions – Expo 2020

ISG delivered a total of 62 Thematic and Country Pavilions that support the Expo's subthemes of opportunity, mobility, and sustainability. These include pavilions for countries from every corner of the world, from Jamaica to Seychelles and Cuba to the Bahamas. The museum quality spaces on each of the pavilions demanded exact fit and finish standards from the team – all backed up with robust state-of-the-art technical infrastructure.

Each pavilion had its own unique design, typical to the country with exhibition features including artefacts, display cabinets, life size models, visual displays, interactive features, plants and retail. The fast-track programme saw the extensive use of off site fabrication to ensure quality and speed of component delivery and to mitigate the risks associated with the COVID-19 disruption.

Project Value
Confidential

PMC
Archiplexus

Size
n/a

Cost Manager
Archiplexus

Procurement Route
Design and Build

Architect/Designer
ISG

Programme Duration
72 weeks

MEP Engineer
Cundall

Start & Completion Dates
November 2019 – July 2021



Zayed National Stadium – Abu Dhabi

ISG was appointed by Mubadala Development in May 2009 as Management Contractor to deliver the AED65M Refurbishment of the Sheikh Zayed National Stadium within 5 months, an incredibly tight programme.

The scope of works undertaken included the supply and installation of the Main Seating Area (42,000 seats), installation and upgrade of all Barrier & Balustrade (to comply with FIFA regulations), installation of new football pitch surface and lighting, upgrade of stadium offices, players areas, offices, stadium toilets, press and media areas along with the complete refurbishment of the Royal Box & V/VVIP areas.

Project Value
Confidential

Size
102,000 sqft

Procurement Route
Traditional

Programme Duration
20 weeks

Start & Completion Dates
June 2009 – October 2009

PMC
CSQ

Cost Manager
CSQ

Architect/Designer
Populous and PFE

MEP Engineer
Cundall



Yas F1 Paddock Club – Abu Dhabi

ISG enhanced the existing Paddock Club hospitality facility, which overlooks the home straight in time for the Formula 1 season finale. Four new self-enclosed flexible hospitality spaces above the current accommodation were built by ISG, providing additional capacity at the stunning race circuit.

ISG also erected a light-weight steel frame structure with extensive glazed elevations, maximising the unobstructed views of the start and finish line. Seating was reconfigured to provide spectators with an outstanding view of the entire home straight track. The project included the installation of new lifts and stair access to accommodate the increased capacity of the Paddock Club.

Project Value
Confidential

Size
80,000 sqft

Procurement Route
Design and Build

Programme Duration
20 weeks

Start & Completion Dates
July 2014 – October 2014

PMC
Aecom

Cost Manager
Aecom

Architect/Designer
Tilke and Partners

Roxy Cinemas – Dubai

Located in Dubai's trendy Box Park area, Roxy wanted to create a boutique cinema to fit in with the trendy feel of the area. ISG developed the existing cold shell open space by following FC Consult design and constructed each room all acoustically sealed. The space was constructed using structural steel supports hanging from the main ceiling 6m above. This mezzanine area acts as maintenance access and is also capable of storing materials.

The areas were constructed into the following:

- 3 VVIP Screens
- 1 VVIP screen with ATMOS latest sound technology
- 1 VIP function room
- Reception, Lounge and snug seating areas for signature dining
- Fully operational kitchen
- Café

- Concessions bar
- Male and Female toilets
- Mezzanine area with offices, server room and cinema equipment

Project Value
Confidential

PMC
CSQ

Size
112,000 sqft

Cost Manager
CSQ

Procurement Route
Traditional

Architect/Designer
Populous and PFE

Programme Duration
36 weeks

MEP Engineer
Cundall

Start & Completion Dates
May 2015 – January 2016



Playtown, City Walk – Dubai

ISG were awarded an important high-profile contract by Meraas Leisure & Entertainment to fit out the children's entertainment facility at City Walk. The project consisted of a 50,000 sq ft family entertainment centre, spread across 3 floors based on the characters from Mattel located in the prestigious City Walk complex.

ISG took the premises from a shell and core to complete fit out inclusive of steel mezzanine, lift shafts along with escalator and elevator installation. The project was heavily themed to represent the characters and scenes within the relevant shows including full IP approval, with facades, play structures, climbing frames as well as a 4D cinema.

Project Value
Confidential

PMC
Meeras

Size
55,000 sqft

Cost Manager
Meeras

Procurement Route
Traditional

Architect/Designer
Forrec

Programme Duration
26 weeks

MEP Engineer

Start & Completion Dates
August 2015 - March 2016



Education and Public Sector

“ISG demonstrated a good understanding of the project and provided value for money. There was a very clear brief so there were clear delivery milestones that needed to be achieved. ISG managed the programme very well, making everything straight forward.”

Ben Bailey, Director of Campus, University of Wollongong

With many public sector and education institutions reliant on state-of-the-art spaces and technology, the spaces that house them and the people developing them must evolve, just as technology does. **It’s about transformable facilities, collaborative research spaces and engaging with clients early to create spaces tailored to their needs.**

At ISG, beyond being builders, we also see ourselves as enablers of the important activities undertaken by educators, civil servants and students every day. Creating safe, high-quality environments is a serious choice we make. As a result, we emphasise collaboration and shared goals throughout the construction process, with the intent of helping public agencies meet both current and future needs. We have worked collaboratively with leading further education providers to deliver truly inspiring and effective spaces including workshops, studios, laboratories, auditoriums, leisure facilities and teaching areas. Our experience working with government bodies is comprehensive, and we have strong relationships with many local authorities and government agencies.

Our education and public sector programmes and projects benefit from our broad insights and experience of what makes best practice from across the public and private sectors.

Balancing efficiency with quality requires a clear understanding of the unique needs of our customers, other stakeholders and the end users.

When delivering public sector environments, we make sure to put effectiveness, efficiency and value for money at the heart of our delivery strategy. We strive to work collaboratively with our customers, helping them realise a more intelligent use of their space and making their capital investment go even further.

University of Birmingham – Dubai

ISG were involved in creating the University of Birmingham launch their first ever global campus. ISG completed the phase one fit out of the state-of-the-art teaching facility in Dubai. The University of Birmingham is the first global top 100 and member of the UK's elite Russell Group of universities to establish a campus in Dubai, creating a world-class learning environment for students from across the UAE and beyond. ISG was appointed to deliver the first phase of the campus over an accelerated 12-week programme to accommodate the university's first intake of students in autumn 2018.

Encompassing 28,000sq.ft. of space, ISG successfully delivered a range of advanced facilities including a 180-seat lecture theatre, a fully equipped science teaching laboratory and a state-of-the-art computer laboratory. The scheme also included the provision of digitally connected teaching spaces, tutorial rooms and seminar facilities, with ISG installing the very latest digital infrastructure to support the future growth of the campus.

Project Value
Confidential

PMC
BDP

Size
28,000 sqft

Cost Manager
DG Jones and Partners

Procurement Route
Traditional

Architect/Designer
BDP

Programme Duration
29 weeks

MEP Engineer
Horea Lea

Start & Completion Dates
August 2017 - March 2018



University of Wollongong – Dubai

ISG were responsible for the fit out of a dedicated campus building for the University of Wollongong in Dubai, comprising of 165,000 square foot of internal space. This includes science laboratories, lecture theatres, media communication room, auditorium, staff offices, seminar classrooms, reception areas, kitchens and cafeterias.

ISG's project scope included: the entire shell and core fit out including base-build plant validations; full MEP works including AV/IT, gypsum, operable and glazed partitions; raised access and screeded floors; back of house kitchens and a FOH student cafeteria area; bespoke joinery works including lab benches and workstations; technical laboratory fit outs.

Project Value
Confidential

Size
165,000sqft

Procurement Route
Traditional

Programme Duration
28 weeks

Start & Completion Dates
August 2019 – March 2020

PMC
Alexander Mac

Cost Manager
Currie and Brown

Architect/Designer
Woods Baggot

MEP Engineer
Cundall



Federal Tax Authority – Dubai

ISG provided the UAE Federal Tax Authority with technical design and fit out services for its Dubai office, located on level 22-24, Central Park Office Tower, DIFC. ISG mobilised to site on April 15 and handed over the project on August 12, 2018.

The chic office design features a neutral colour palette and interiors, which was brought to life by a careful choice of rich materials and finishes. The muted interiors are accented by striking and eclectic lighting fixtures and living green walls, which make a breathtaking statement, and create an alluring and inviting office environment. ISG's scope included the design and build of the three office levels which total 60,000 sq ft as well as, the design development, detailing and engineering design of all electrical and mechanical systems. Some aspects of the scope were delivered, while the project was progressing onsite.

Project Value Confidential	PMC Alexander Mac
Size 55,000sqft	Cost Manager Currie and Brown
Procurement Route Design and Build	Architect/Designer Cambridge Interiors LLC (up to concept)
Programme Duration 21 weeks	MEP Engineer Elements WGD LLC (up to concept)
Start & Completion Dates March 2018– July 2018	

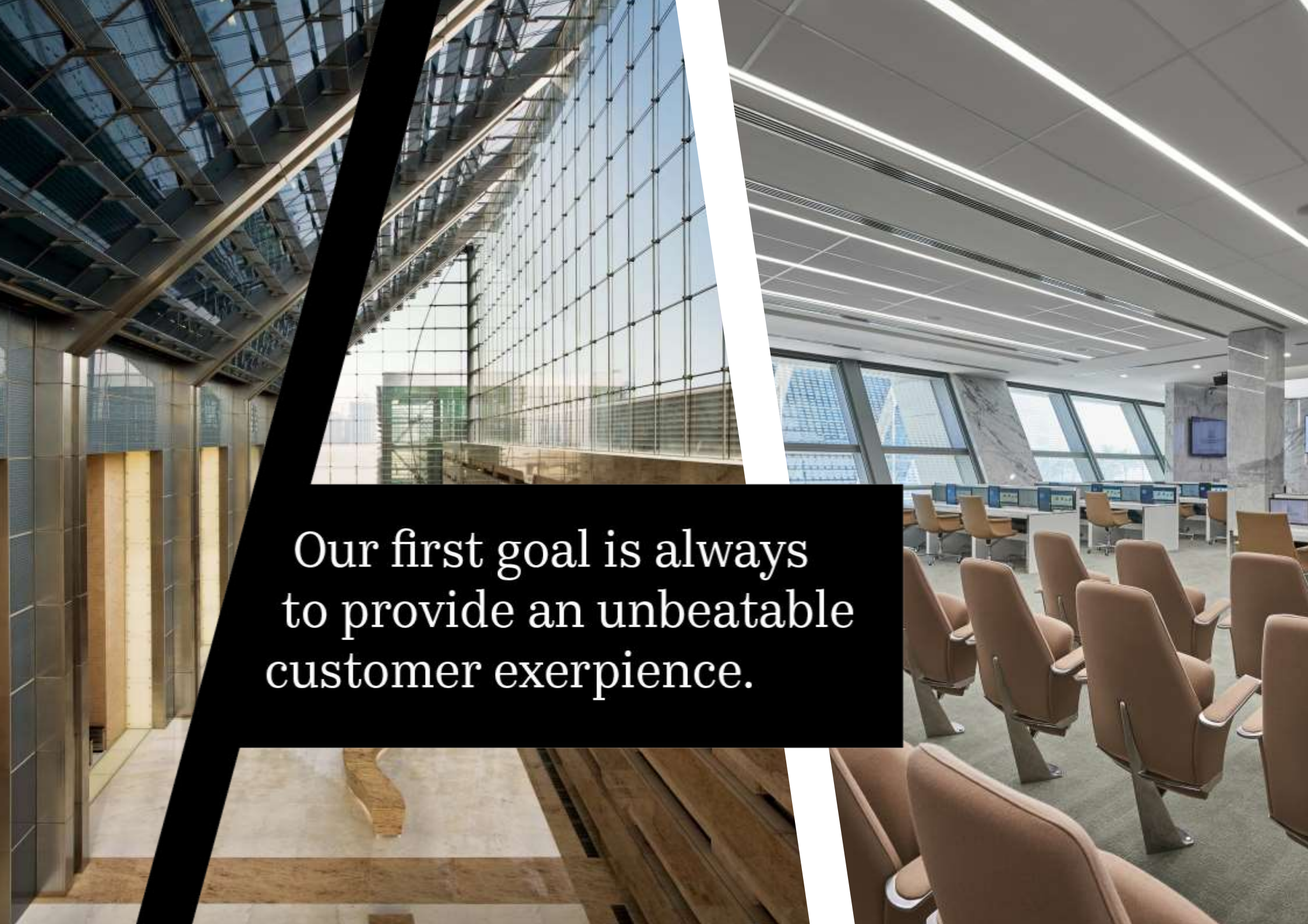


ADAA HQ – Abu Dhabi

ISG completed the fit out of the new The Abu Dhabi Accountability Authority (ADAA), which is located in the United Square Towers, a new mixed-used development in Abu Dhabi City. ADAA was established as an independent body in 2008 under the authority of His Highness Sheikh Mohamed bin Zayed Al Nahyan, Crown Prince of Abu Dhabi and Deputy Supreme Commander of the UAE Armed Forces. A decade following its establishment, ADAA oversees 300 Government-owned entities and subsidiaries.

As its scope expanded, so did its workforce, and the demand for highly-specified office space, designed and delivered with ADAA's mandate in mind, increased. In August 2018, ISG was appointed to undertake the fit out of their new 65,000 sq. ft offices from a shell and core build and deliver a lateral working environment, including 236 closed workstations, CEO suite, meeting rooms, break out areas, a library and majlis – all located on one floor.

Project Value Confidential	PMC AECOM
Size 68,000sqft	Cost Manager AECOM
Procurement Route Traditional	Architect/Designer Perkins and Will
Programme Duration 15 weeks	MEP Engineer TUV - SUD
Start & Completion Dates August 2018– November 2018	



Our first goal is always
to provide an unbeatable
customer experience.

Customer Experience (CX)

Our commitment to providing a good customer service is unparalleled, and wherever you are in the world you'll get the same global customer experience.

ISG is focused on building lasting relationships with our clients.

We monitor your experience through our **CX Reviews**, where our Customer Experience Representatives will meet you at key points of your project journey for crucial feedback.

From the very first day of your project, through delivery, to aftercare and beyond, our customer experience department will be readily available.

Providing the expertise, seniority, and enthusiasm required to capture your feedback, relay it to the business fearlessly, harness the required resources, and then instruct the delivery team to act rapidly and decisively for your benefit.

We analyse the feedback we get from you which helps us identify trends in our projects, allowing us to celebrate what we do well and make improvements where required. This offers you the chance to craft a continuous thread of impartial feedback over your project's lifetime.



CX Average Satisfaction Score



Net Promoter Score



2021 Global Revenue from repeat customers



Clients Quotes

The Journey...

We will meet with you at:

- Kick-off
- Midway
- Post completion

The Benefits...

During our sessions, we will cover:

- Key drivers
- Project delivery
- Communication
- Corrective actions

"It has been an absolute pleasure working with ISG. The team were excellent and delivered what was expected, if not more. It was clear there was a collective team working together and my expectations were still managed even though I was not in the country. I have already recommended ISG for future projects globally."

Jonathon Lace, Linklaters

"I consider ISG as a grade 1 contractor in the market. My perception is ISG are transparent and highly credible, we did not want any last-minute communication so this has been great."

Abdul Naser, Du HQ



Nuturing a culture that empowers our people to build something special.



Our culture and values

Our people are what make us great, so we foster a culture **that's** boldly open and honest, and rewards the best ideas.

Our core values are the guiding principles that determine our actions and behaviours at ISG. Rooted in the brand, they are what drive us every day and provide the building blocks for our common corporate culture. They attract the best people to ISG and inspire our teams as well as reflecting our bold ambitions.

Every day our talented people deliver exceptional outcomes for our clients. We do this by upholding our vision and brand promise, committing to our corporate goals, and living our value – Dream Smart, Speak Frankly, Never Stop Learning and Always Care.

Our work is made meaningful by the spaces we create, by those who trust us to deliver them, and the impact they have on the people who use them.

Dream smart

We encourage new thinking and bold ideas backed by knowledge, sound decision-making and first-rate implementation.

Never stop learning

We encourage and reward great ideas. We constantly strive to improve by seeking new knowledge and skills.

Speak frankly

We value clarity and honesty, and we are open and straightforward in all of our dealings. We never shy away from tough conversations.

Always care

We take pride in the quality of our work and demonstrate respect and care for the well-being, health and safety of our customers, our people, and our world.

Our smart, flexible team has innovation in its DNA

As brands look to the future with resilience in mind, the importance of values such as shrewd, agile thinking, trust and truly collaborative relationships have never been so important.

We have long endeavoured to use our position at the forefront of our industry to push boundaries and drive excellence, enabling us to deliver the best possible experience for our customers.

It wouldn't be possible without our people. Their pride in what they do and the collaborative approach that underpins our work is the secret behind our enduring relationships, and why clients come back.

With a keen eye on tomorrow, our commitment to investing in our people and their collective expertise is enabling us to grow and evolve into the future.

We are dedicated to nurturing our expanding team and investing in the next generation of talent, carefully carving out the depth of our skills across the sectors that we serve so we can work smarter and deliver more than ever before.

As we continue to win and deliver the most exciting schemes in our history, our unrivalled team is primed to deliver a bright future.



Alia is proud to be a woman in construction. Having built something special in her own career, she's using her platform to empower others.

Alia Saleh, Finance Director, Southeast Asia and Middle East

A born dreamer and Dubai native, Alia had first-hand experience of what the city had to offer, and knew she wanted to be part of its rapid economic rise and flourishing cityscape.

Joining ISG in 2017, Alia got the chance to do just that, finding herself at home in a world where mega-scale projects and interior fit out schemes ran at speed, and transformative places were brought to life across Southeast Asia and the Middle East. Today, as part of ISG's regional senior leadership team, Alia steers finance teams and IT operations in Singapore and Dubai, UAE, ensuring both functions fully support site operations and commercial teams, while embracing technology to keep ISG operationally efficient.

Scan here to read the full story:



Our employee proposition

We nurture a culture that empowers our people to build something special.

Building something special at ISG means creating a place where you can feel valued, be recognised for your hard work, and feel empowered and excited about the contribution you are making. It's about leaving a legacy in the communities you work in, developing your skills, and making a difference to your team and ISG.

In 2022, ISG Middle East were rated a 2-star employer by Best Companies with an 100% internal response rate. ISG also received a 4.4 out of 5.0 rating on Glassdoor.



Supporting the staging of the 'World's Greatest Show'

ISG successfully delivered the largest number of fit out projects commissioned by Expo 2020 Dubai. These projects include 80 country pavilions, 100+ retail outlets, Expo 2020 Media Centre, Expo Mobilising and Land Mobility Solutions, Expo 2020 Media Centre, seven local Control Centres, 10 of the Best of the Best restaurants, seven local Catering Restaurants, two Food Hubs, North and South Viewing Platforms, and the Service Platform.



volunteering at our local charity school, DCSN



Supply Chain Forum Awards

We like to recognise our supply chain's amazing efforts and successful delivery of major projects and to thank them for working alongside us throughout the many challenging projects we have completed within the year through an awards ceremony of the event.



Move for charity

Throughout the year we have various fund raising activities for our local Charity - Duke Cancer for Special Needs.



Taqdeer - Gold Recognition for international best practices endorsed by the UAE's Ministry of Labour, the International Labour Organization (ILO).



Scan here to read the full story.

Choose safe. Choose health.

We actively push the mental health and physical health of our staff up the agenda and put the power of healthy and safe decision-making squarely in all of our hands.

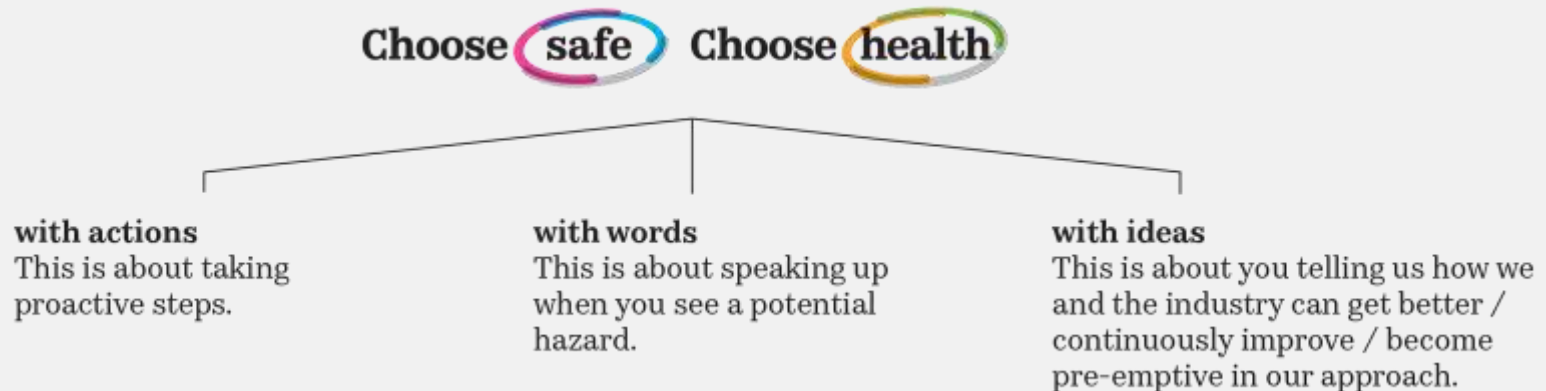
As a rapidly growing business, with a commitment to continuous improvement, we knew we had a significant opportunity to transform health and safety to the benefit of our people, our clients and our supply chain. As a result, we set out to define a clearly differentiated and ambitious future for health and safety at ISG.

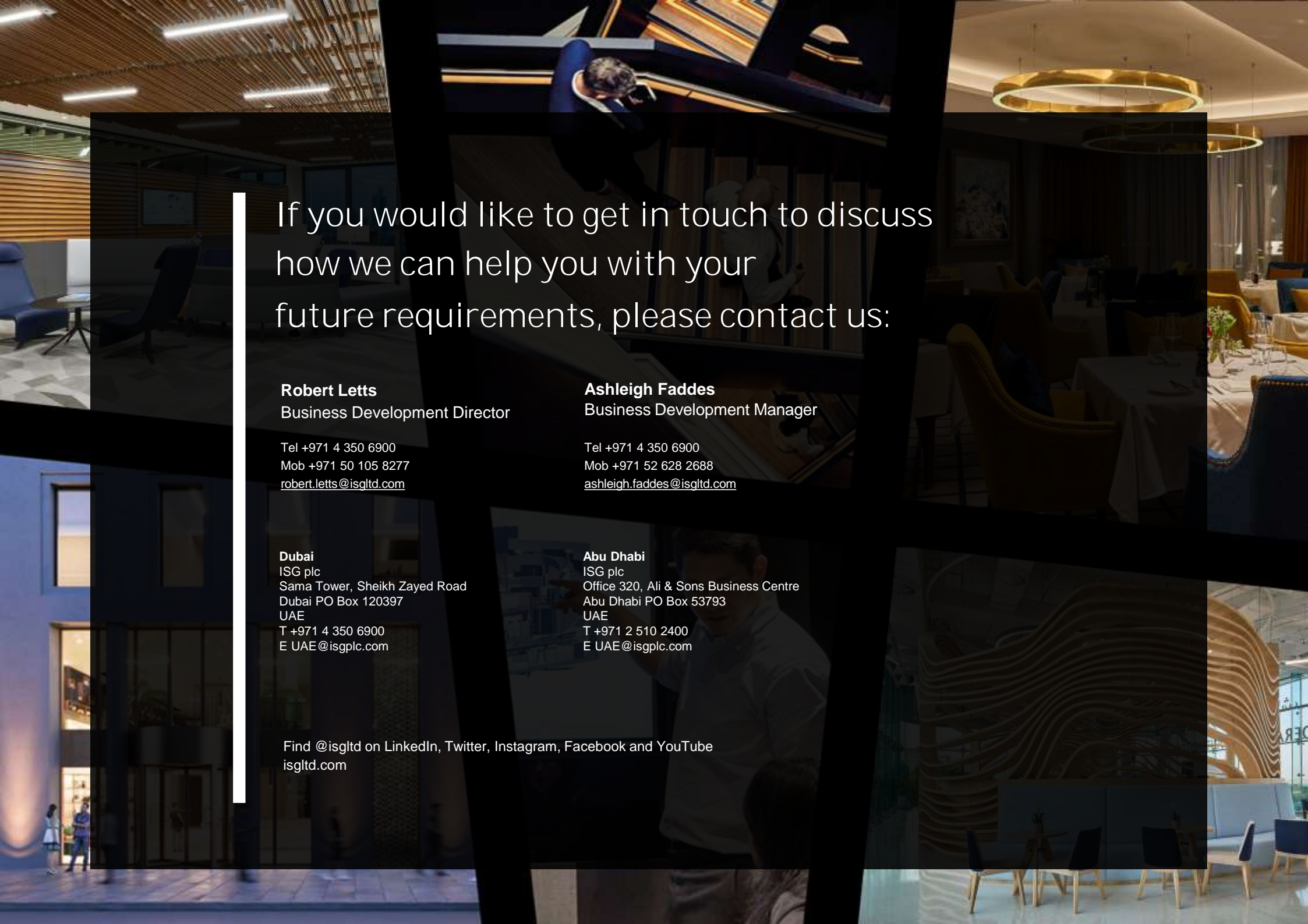
For years, we have considered health and safety to be about more than reducing accidents. Perhaps nowhere is this clearer than in our value to 'always

care', which pushes us to think holistically about the well-being of the people, environments and communities we touch every day.

Given that health issues are 100 times more lethal than safety issues on site, there was no question that health had to be a significant part of our approach moving forward. Early on, we made the decision that in our new programme, physical, mental and emotional health would be as important to us as reducing accidents on site.

'Choose safe. Choose health' puts the power of healthy and safe decision-making squarely in all of our hands. Across our business and in every geography where we work, our ambition is to create an environment in which we are all empowered to advance health and safety in three distinct ways: through our actions, through our words, and with our ideas.





If you would like to get in touch to discuss how we can help you with your future requirements, please contact us:

Robert Letts
Business Development Director

Tel +971 4 350 6900
Mob +971 50 105 8277
robert.letts@isg ltd.com

Ashleigh Faddes
Business Development Manager

Tel +971 4 350 6900
Mob +971 52 628 2688
ashleigh.faddes@isg ltd.com

Dubai
ISG plc
Sama Tower, Sheikh Zayed Road
Dubai PO Box 120397
UAE
T +971 4 350 6900
E UAE@isgplc.com

Abu Dhabi
ISG plc
Office 320, Ali & Sons Business Centre
Abu Dhabi PO Box 53793
UAE
T +971 2 510 2400
E UAE@isgplc.com

Find @isg ltd on LinkedIn, Twitter, Instagram, Facebook and YouTube
isg ltd.com